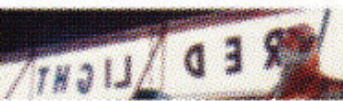
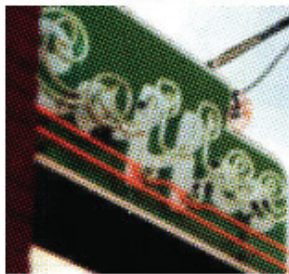


A Presentation of

PSU COMMUNITY DEVELOPMENT STUDENTS' SE NEIGHBORHOODS ASSET MAPPING RESULTS

June 5th / 7pm-8pm



ARE YOU INTERESTED IN WHAT NEIGHBORING ORGANIZATIONS ARE DOING TO FOSTER AND BUILD A VIBRANT COMMUNITY IN THE SOUTHEAST PORTLAND AREA? PLEASE JOIN US AS WE SHARE OUR FINDINGS WITH REPRESENTATIVES FROM THE CITY OF PORTLAND AND LOCAL NEIGHBORHOOD ASSOCIATIONS.

@ LUTHERAN COMMUNITY SERVICES
605 SE 39TH AVE. PORTLAND, OR

Please RSVP by May 23rd to:
SE Neighborhoods Asset Mapping Project
tbcamp7@gmail.com or call 971-275-4953

Enjoy Light Refreshments & Networking Opportunities!